

# MONTHLY MEMBERSHIP PROGRESS REPORT

LOCATION ONTARIO

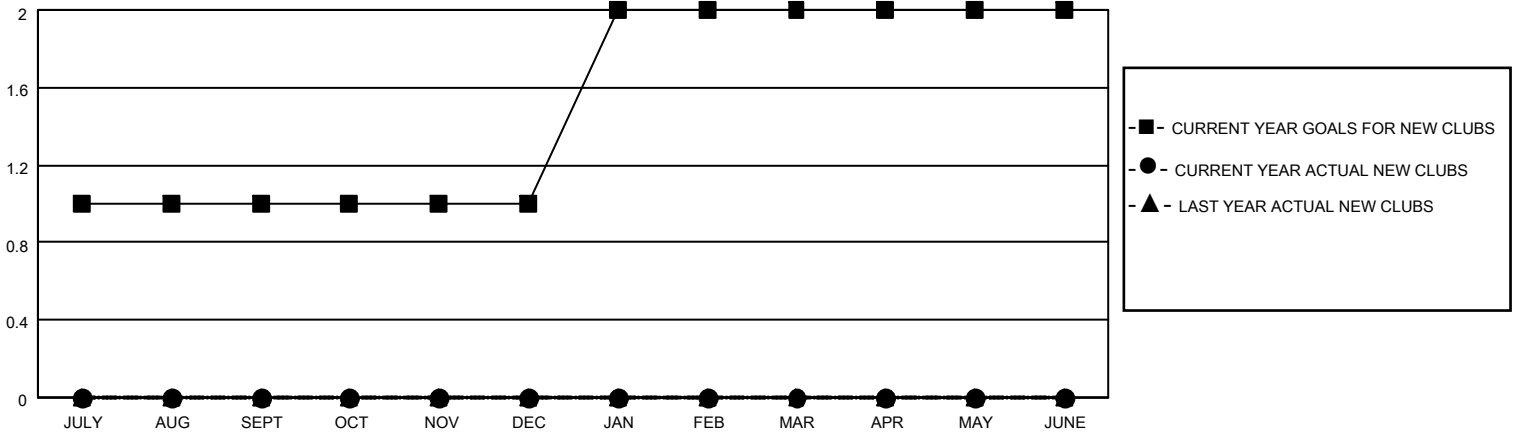
District A 5

Results as of: 6/30/2022

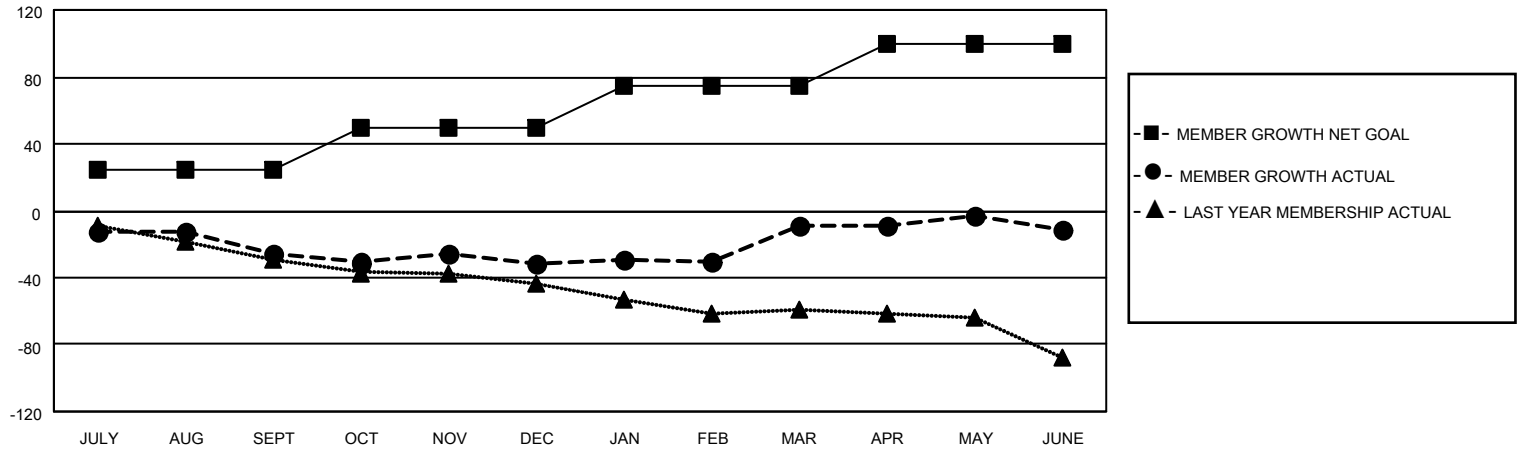
Clubs			
RESULTS FOR 2021-2022			
QUARTER	NEW CLUB GOAL	NEW CLUBS	DROPPED CLUBS
JULY/AUG/SEPT	1	0	0
OCT/NOV/DEC	0	0	0
JAN/FEB/MAR	1	0	0
APR/MAY/JUNE	0	0	0

Members			
RESULTS FOR 2021-2022			
QUARTER	MEMBER GROWTH NET GOAL	MEMBER GROWTH ACTUAL	DROPPED MEMBERS ACTUAL (including transfers)
JULY/AUG/SEPT	25	2	27
OCT/NOV/DEC	25	23	24
JAN/FEB/MAR	25	47	22
APR/MAY/JUNE	25	37	35

**GOALS AND ACTUAL NEW CLUBS CUMULATIVE**



**GOALS AND ACTUAL MEMBERS CUMULATIVE**



DROPPED CLUBS: 0	
<b>DROPPED MEMBERS</b>	
DECEASED	26
CLUB CANCELLED	0
OTHER	83
<b>TOTAL</b>	<b>109</b>

31 CLUBS OF 51 ADDED 1 OR MORE NEW MEMBERS

[CLICK HERE FOR CUMULATIVE MEMBERSHIP DATA](#)

<u>GENDER DISTRIBUTION</u>	
MALE	587 (55.07%)
FEMALE	479 (44.93%)
NON BINARY	0 (0.00%)
PREFER NOT TO ANSWER	0 (0.00%)
<b>TOTAL FAMILY UNIT MEMBERS</b>	
	<b>208</b>
<b>FAMILY MEMBERS PAYING HALF DUES</b>	
	<b>107</b>